



## Disclosure under Basel III as on Chaitra end 2080

Capital Adequacy Framework, 2015 requires making a set of disclosure on the capital adequacy & risk management framework of the bank. Disclosure requirement based on Financial Statement as on Chaitra end 2080 are as follows.

### A. Capital Structure & Capital Adequacy

#### Tire 1 Capital and Breakdown of its Components

S.N	Particulars	NPR in 000's
a	Paid up Equity Share Capital	4,733,690
b	Share Premium	
c	Statutory General Reserves	1,094,053
d	Retained Earnings	3,797
e	Un-audited current year cumulative profit/(loss)	145,088
f	Capital Redemption Reserve	
g	Capital Adjustment Reserve	
h	Dividend Equalization Reserves	
i	Other Free Reserve	
j	Less: Goodwill	
k	Less: Deferred Tax Assets	
l	Less: Fictitious Assets	
m	Less: Investment in equity in licensed Financial Institutions	
n	Less: Investment in equity of institutions with financial interests	
o	Less: Investment in equity of institutions in excess of limits	
p	Less: Investments arising out of underwriting commitments	
q	Less: Reciprocal crossholdings	
r	Less: Purchase of land & building in excess of limit and unutilized	33,017
s	Less: Other Deductions	
	<b>Total Tier 1 Capital</b>	<b>5,943,613</b>

#### 2. Tire 2 Capital and Breakdown of its Components :

S.N	Particulars	NPR in 000's
a	Cumulative and/or Redeemable Preference Share	
b	Subordinated Term Debt	
c	Hybrid Capital Instruments	
d	General loan loss provision	781,747
e	Exchange Equalization Reserve	375
f	Investment Adjustment Reserve	2,500
g	Asset Revaluation Reserve	
h	Other Reserves	
	<b>Total Tier 2 Capital</b>	<b>784,622</b>



### 3 Total Qualifying Capital

S.N	Particulars	NPR in 000's
i	Tier 1 Capital [Core Capital]	5,943,613
ii	Tier 2 Capital [Supplementary Capital]	784,622
<b>Total Capital Fund</b>		<b>6,728,236</b>

### 4 Capital Adequacy Ratio

S.N	Particulars	Percentage
i	Tier I Capital to RWE	11.29%
ii	Total Capital to RWE	12.78%

### 5. Summary of the terms, conditions and main features of all capital instruments, especially in case of subordinated term debts including hybrid capital instruments.

The bank has not raised any funds through subordinate term debt including any hybrid capital instruments.

### 6. Summary of Bank's internal approach to assess the adequacy of capital to support current and future activities

The Bank has formulated Internal Capital Adequacy Assessment Process ('ICAAP') which has a sound and comprehensive policy and process for evaluating the Bank's capital including the overall risk profile, business projections and capital management strategies. It covers the capital management policy of the Bank, set out the process for assessment of the adequacy of capital to meet regulatory requirements support current and future activities and meet the Pillar I and material Pillar II risks to which the bank is exposed to.

The Risk Management Policy of the Bank provides the comprehensive stress testing guidelines for credit, market, liquidity and other risk faced by the Bank. Stress testing takes into account extreme but probable scenarios to assess the bank's resilience to adverse circumstances and resultant impact on the Bank's risk profile and capital position. This ensures that the bank has robust and forward looking capital planning and risk management process. Scenario assessment such as the fall in the financial markets, a falling trend in the assets quality, volatile liquidity condition, negative changes in macroeconomic factors etc., are taken into consideration while carrying out the stress testing.

## B. Risk Exposures

### Risk weighted exposures for Credit Risk, Market Risk and Operational Risk

S.N	Particulars	NPR in 000's
i	Risk Weighted Exposure for Credit Risk	48,493,914
ii	Risk Weighted Exposure for Operational Risk	2,673,382
iii	Risk Weighted Exposure for Market Risk	174.65
<b>Total Risk Weighted Exposures before Pillar II adjustment</b>		<b>51,167,471</b>



**1 Risk weighted exposures under each 11 categories of Credit Risk:**

S.N	Particulars	NPR in 000's
i.	Claims on Government & Central Bank	
ii.	Claims on Other Official Entities	
iii.	Claims on Domestic Banks	798,901
iv.	Claims on Domestic Corporates	19,516,552
v.	Claims on Regulatory Retail Portfolio	14,591,271
vi.	Claims secured by Residential Properties	3,233,835
vii.	Claims secured by Commercial Real Estate	826,773
viii.	Past Due Claims	68,508
ix.	High Risk Claims	3,471,546
x.	Lending against Shares(up to Rs. 5 Million)	354,368
xi.	Lending against Shares(above Rs.5 Million)	1,751,969
xii.	Real Estate loans for land acquisition and development (Other than mentioned in Capital Adequacy framework 2015-point 3.3(j)(1)(k))	210,975
xiii.	Real Estate loans for land acquisition and development (For institutions/projects registered/licensed and approved by Government of Nepal for land acquisition and development purposes)	1,370,927
xiv.	Personal Hire purchase/Personal Auto Loans (up to Rs. 2.5 Million)	222,597
xv.	Personal Hirepurchase/Personal Auto Loans (above Rs. 2.5 Million)	119,509
xvi.	Investments in equity and other capital instruments of institutions listed in stock exchange	361,058
xvii.	Investments in equity and other capital instruments of institutions not listed in the stock exchange	4,368
xviii.	Staff loan secured by residential property	281,418
xix.	Other Assets	881,808
xx.	Off Balance- Sheet Items	391,523
<b>Total Credit Risk Weighted Exposures</b>		<b>48,493,914</b>

**2 Types of eligible credit risk mitigants used and the benefits availed under CRM.**

S.N	Particulars	NPR in 000's
i.	Deposits with Banks	806,897
ii.	Deposits with other banks/financial institutions	
iii.	Gold	
iv.	Government and NRB Securities	
v.	Guarantee of Government of Nepal	
vi.	Securities/Guarantee of other Sovereigns	
vii.	Guarantee of Domestic Banks	
viii.	Guarantee of Multilateral Development Banks	
ix.	Guarantee of Foreign Banks	
<b>Total Credit Risk Mitigants</b>		<b>806,897</b>



**3 Total Risk Weighted Exposure calculation table:**

S.N	Particulars	NPR in 000's
i.	Risk Weighted Exposure for Credit Risk	48,493,914
ii.	Risk Weighted Exposure for Operational Risk	2,673,382
iii.	Risk Weighted Exposure for Market Risk	174.65
iv.	Adjustments under Pillar II :	
.	3% of gross income for Operational Risk	
	Ad RWE equivalent to reciprocal of capital charge of 2% of gross income	439,855
	Overall risk management policies and procedures are not satisfactory. Add 2% of RWE	1,023,349
	<b>Total Risk Weighted Exposure</b>	<b>52,630,676</b>

**5. Amount of Non-Performing Assets (both Gross and Net)**

S.N	Particulars	Gross (in 000's)	Net (in 000's)
i	Re-structure & Reschedule	23,255	-
ii	Substandard	1,344,823	1,015,625
iii	Doubtful	265,665	133,543
iv	Bad	199,668	5,075
	<b>Total Non Performing Assets</b>	<b>1,833,412</b>	<b>1,154,246</b>

**6. NPA Ratios**

S.N	Particulars	Percent
i.	Gross NPA to Gross Loan & Advances	3.41
ii.	Net NPA to Net Loan & Advances	2.15

**7. Movement of Non-Performing Assets**

**NPR (in 000's)**

S.N	Particulars	This Year	Last Year	Change
i.	Non-Performing Assets (In Amt)	1,833,412	947,420	885,991
ii.	Non-Performing Assets (In %)	3.41	2.11	1.30

**8. Write off of Loan and Interest Suspense**

S.N	Particulars	NPR in 000's
i.	Loan written off during the reporting period	2,175
ii.	Interest written off during the reporting period	4,201
	<b>Total amount written off</b>	<b>6,376</b>

**9. Movement in the Loan Loss Provisions and Interest Suspense.**

S.N	Particulars	This Year	Last Year	Change
i.	Loan Loss Provisions	1,460,913	1,091,704	369,209
ii.	Interest Suspense	552,213	477,488	74,725



### 10. Details of Additional Loan Loss Provisions

S.N	Particulars	NPR in 000's
i.	Provisioning for Pass Loans	583,324
ii.	Provisioning for Watchlist Loans	198,422
iii.	Provisioning for Restructured/Rescheduled Loans	23,255
iv.	Provisioning for Sub-standard Loans	329,196
v.	Provisioning for Doubtful Loans	132,121
vi	Provisioning for Bad Loans	194,592
vii	others if any	
<b>Total amount of additional loan loss provision</b>		<b>1,460,913</b>

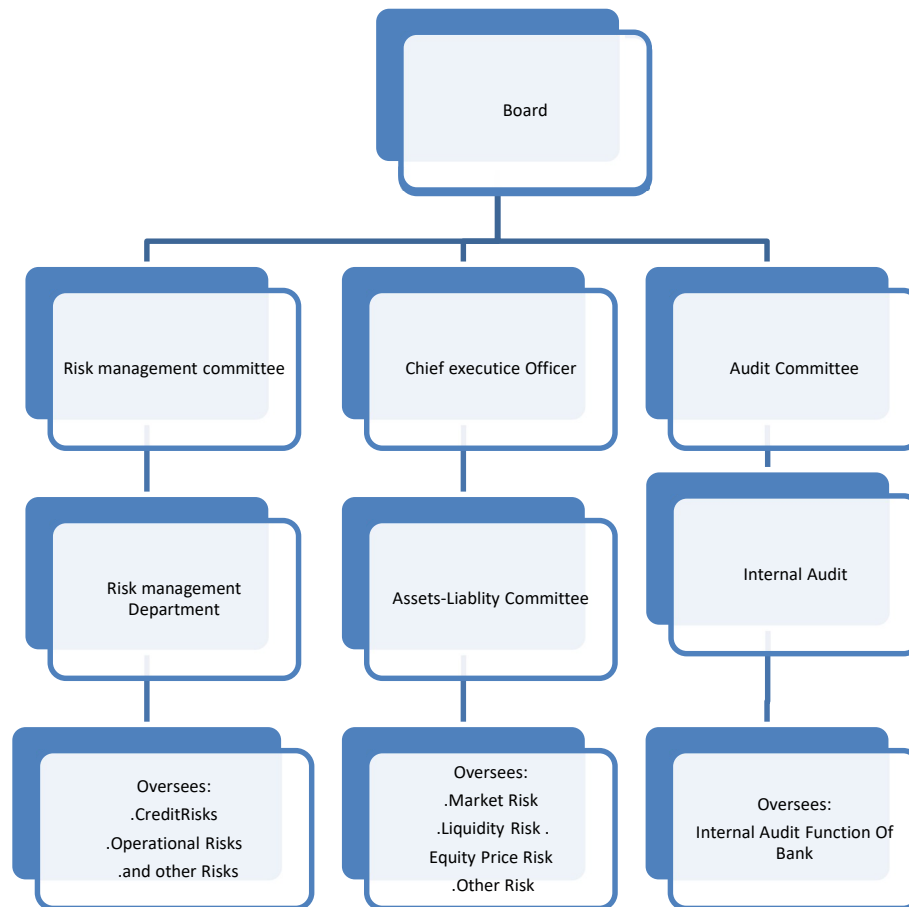
### 11. Segregation of Investment Portfolio into held for trading, Held to Maturity & Available for Sale.

S.N	Particulars	NPR in 000's
i.	Held for Trading	-
ii.	Held to Maturity	9,710,068
iii.	Available for sale	463,906
<b>Total Investment</b>		<b>10,173,974</b>

### C. Risk Management Function

1. Risk management in the bank includes risk identification, measurement and assessment, and its objective is to minimize negative effects that risks can have on the financial result and capital of a Bank. Risk management strategies include the transfer of risk, avoidance of risk, reduction of the negative effect of the risk and acceptance of the consequences of a particular risk. The design of a risk management system depends among other things, onitssize, capital structure, complexity of functions, technical expertise, and quality of Management Information System (MIS) and is structured to address both banking as well as nonbanking risks to maximize shareholders' value.

The Bank follows the following internal structure for effective Risk Management:



The bank under the direction and oversight of the Board adopts the Risk Management Policy to ensure business strategies, profitability and financial stability are inconsistent with the Bank's strategies and risk appetite. The Bank separately reviews the credit risk, operation risk and market risk to ensure that the Bank operate within the risk appetite expressed by the Risk Management Framework.

## 2 Risk Management Techniques

The Bank adopts the following techniques for these specific types of the risks:

### i. Credit Risk

The Bank exercises the following techniques in assessing the credit risk:

- Strict adherence to Board approved policies
- Independent review of credit proposals by Business Development Officers and Risk Management Department
- Well-defined delegated authority levels.
- Effective observance to post disbursement credit risk management techniques.

### ii. Operational Risk

The Bank has developed a framework for managing operational risk and evaluating the adequacy of capital covering the bank's appetite and tolerance for operational risk, as specified through the policies for managing this risk, including the extent and



manner in which operational risk is transferred outside the bank. It also includes policies outlining the bank's approach to identifying, assessing, monitoring and controlling/mitigating the risk.

**iii. Liquidity Risk**

The objective of liquidity management is to ensure that bank has sufficient funds to meet its contractual and regulatory financial obligations at all times. Basically the Bank adopts the following norms for liquidity risk management:

- Strict adherence to BaselII and NRB requirement to maintain the liquidity ratios
- Keeping the close eye on the baking and economic scenario.

**iv. Foreign Exchange Rate Risk**

The following norms are adopted by the bank to manage the exchange rate risk:

- Maintenance of the Net Open Position within the threshold expressed by the Liquidity Management Framework.
- Frequent monitoring of Open positions basis and analysis of the gains/losses.

**v. Interest Rate Risk**

The following norms are adopted by the bank to manage the interest rate risk:

- Effective cost benefit analysis for the product development
- Regular Net Interest Margin and Credit to Deposit Ratio monitoring
- Gap analysis to check the measures for the mismatches between rate sensitive liabilities and rate sensitive assets.

**vi. Capital Risk**

The following norms are adopted by the bank to manage the capital risk:

- Meeting the regulatory capital requirements
- Monthly computation of Capital Adequacy Ratios under normal and stress conditions.